



ReDefine Next 100 global impact program - seeking a Just Transition

GUIDEBOOK - OPEN THEME APPLICATION

First, check in the Guidebook or online. For other inquiries: rdapplications@globari.org

Key concepts:

Global Arena Research Institute (GARI) - GARI is a non-profit research institute. GARI has a flagship event that happens every 18 months called the Next 100 Symposium, it also has a program called ReDefine Next 100.

ReDefine Next 100 global impact program - also "ReDefine", "ReDefine N100", "ReDefine Next 100" or "RD"

ReDefine Directory - where candidates make profiles and projects and find others to join their team or be found to join a team

Project Leader - candidate who wishes to lead a project and team and must submit a project in the RD Directory, they are responsible to create a team, match criteria and submit a project proposal

Team Member - candidate who does not lead a project but is on a team, they do not have to attend events in Berlin and do not have to pay the program fee (but will not be hosted in Berlin) - candidates can attend Berlin if they pay the program fee

Initial Application Form - the very first form all candidates submit to be considered for the ReDefine program

Final Application - once candidates have formed teams and settled on a project proposal (and met all the criteria) they can submit their project for final evaluation

Next 100 week - in-person attendance week in Berlin between the 12th and 18th of May, also encompassing the Next 100 Symposium (also referred to as N100 week)

Next 100 Symposium - flagship event of GARI. This year happening in Berlin May 16-18 2024.

Key dates:

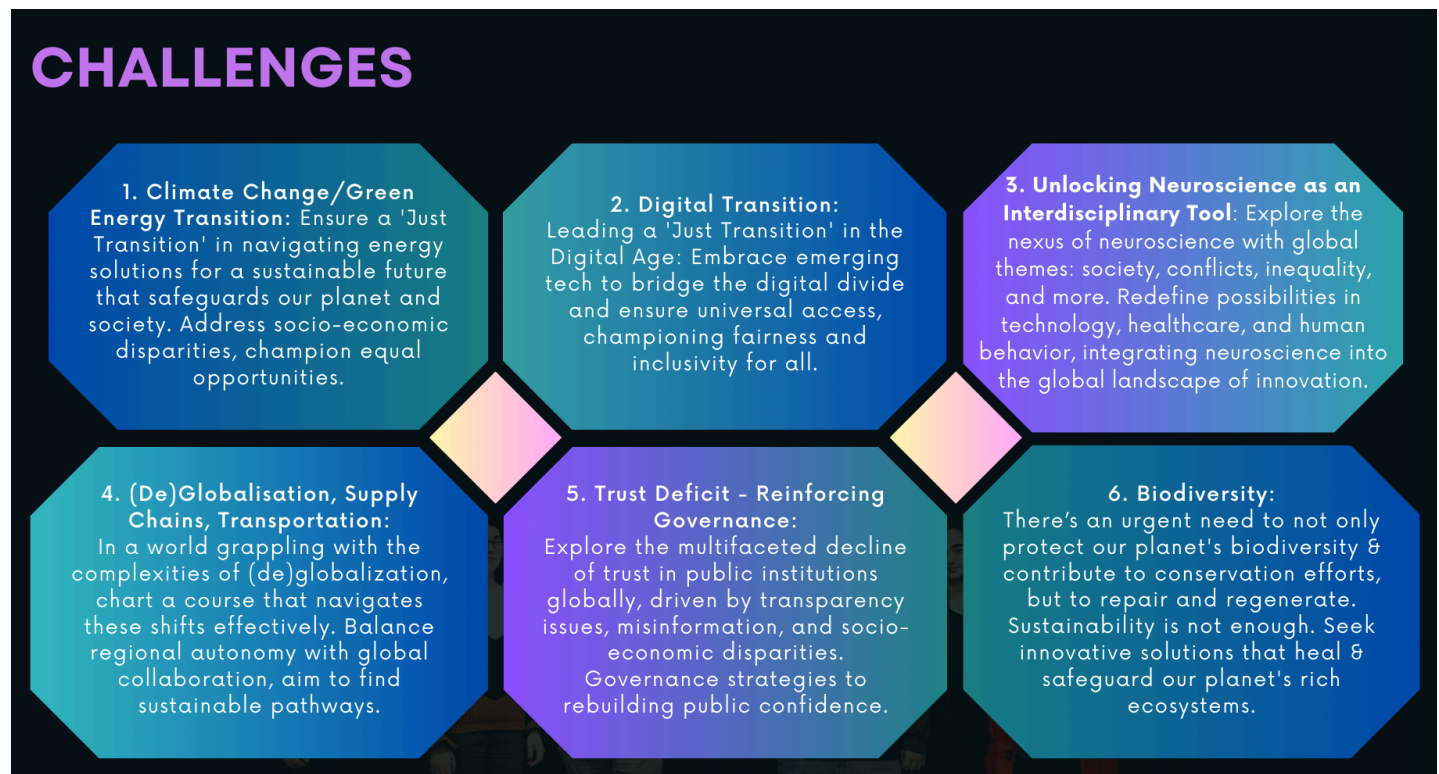
17. Jan	Initial Application Form open - first stage of the application process
15. March	Deadline for final project and team submission in the RD Directory - third and final stage of application process
28. March	Announcement of selected teams and projects
3. April - 10. May	ReDedine Next 100 program - virtual program (mentoring, workshops & project building)
3. May	All projects get published online in run up to the N100 Symposium
12-18. May	Next 100 week + N100 Symposium (Team Members do not need to attend)

ReDefine Next 100 - seeking a Just Transition

Connected to the Next 100 Symposium year-round, ReDefine Next 100 is a dynamic initiative uniting individuals to tackle global challenges. Crafted for interdisciplinarity, diversity, and expertise, teams aim for real project application and stakeholder interest, navigating the dynamic landscape of the core themes outlined below.

From January 2024, the program unfolds through key stages, from team competition to project development, incubation, and impactful presentations. Outstanding teams vie for funding, incubation, partner support, and guarantor application.

Teams embark on a transformative journey by applying directly for a challenge, presenting their ideas at any stage of development. Starting virtually in March 2024, teams undergo workshops and mentoring, culminating in a week-long meeting in Berlin that concludes with the Next 100 Symposium. Here, they present and pitch solutions, competing for funding, mentorship, and application support. Post-symposium, the project work continues with additional online mentoring and workshops. Teams showcase progress at post-Next 100 presentations across Europe. Throughout these stages, teams are assessed, advancing through the journey, with not all proceeding to the Next 100 Symposium and subsequent presentations.



Who is ReDefine N100 for?

Anyone wanting to work towards real and pressing issues happening globally. Individuals already working on projects but wanting to expand and be part of something more. Individuals with specific expertise and experience/skills/knowledge that want to expand into an interdisciplinary project.

Who is ReDefine N100 NOT for:

If you are too busy to take on an additional project or have full-time commitments that do not permit you to take on another project. This will take 10-30 hours a month, and one full-time week during the N100 Symposium (12-18. May).

Must focus on one of the following challenges:

1. Climate Change/Green Energy Transition (must include “just transition” aspect)
2. Digital Transition (must include “just transition” aspect)
3. Unleashing Neuroscience as an Interdisciplinary Tool
4. Governance & Trust
5. (De)Globalisation/Supply Chains/Transportation
6. Biodiversity

Teams

1. Must be between 3-5 people
2. Must be gender-diverse
3. Must include at least one individual from (whether academically or in practice)
 - a. Humanities/Social science background (economy, politics, international relations, philosophy)
 - b. Data Science/Technology background
 - c. Business/Entrepreneurship background

Team/Focus formation

1. Team formation
 - a. Can form through RD Directory - fill out profile and search for team members or be found
 - b. If you already have a team or team members, they must also fill out the initial application form (and look for additional team members in RD Directory or be complete)
 - c. Can ask for assistance in searching/matching with team members from the GARI team
2. Application
 - a. First fill out the initial application form as soon as possible - this will give you access to create a profile in the ReDefine Directory
 - b. Once your initial application form has been approved, you will be invited to create a profile and project in the ReDefine Directory - this is where you can also find team members for your project or projects to join.
 - c. Submit the final application of the project with full team

STAGE - ELEMENT	PROJECT LEADER	TEAM MEMBER
Initial Application Form	Must submit - tick "Project Leader"	Must submit - tick "Team Member"
RD Directory	<ul style="list-style-type: none"> • Create profile • Create project • Find team members • Be found by aspiring team members to join your project 	<ul style="list-style-type: none"> • Create Profile • Find projects to join • Be found by Project Leaders to join their projects
Final project application (Deadline March 28th)	Submit your project once you have all team members necessary and meet submission criteria	You do not submit the project for final evaluation, your Project Leader submits it
Virtual mentorship and workshops (March-May)	Must attend all scheduled workshops and individual mentoring (will be arranged with Leader - and Team)	You do not have to attend as long as someone (usually Leader) from your team attends.
Next 100 week	Must attend - Berlin 12-18. May	Only attend if you have paid the program fee.
Next 100 Symposium	Must attend 16-18. May	Can attend without fee (but not the Next 100 week workshops 12-15.May - above)

APPLICATION AND SELECTION:

ReDefine Directory

- ❖ **Profiles** section - the RD Directory allows candidates who's initial application form has been selected to continue in the application process and create profiles. These profiles will showcase their skills, expertise, and interests related to the ReDefine program. This feature enables potential team members to discover and connect with like-minded individuals to form teams
 - Create your profile and be found by others wanting to form teams
 - Look for others to form a team (e.g. need someone from data science, with a focus on "globalisation")
 - This Directory will continue to exist in case you need additional team members during the project development phase (throughout 2024)
- ❖ **Projects** section: detailed information about the project, its goals, and eligibility criteria. Applicants can access and submit their proposals through this portal.

APPLYING AS A PROJECT LEADER:

1 FROM 15 JAN Initial Application

Submit your initial profile and project, checking the box "Project Leader" and submit ASAP. If selected in the first stage, you'll be invited to create a profile and project in the ReDefine Directory.

You'll want to submit this as soon as possible so you can start forming your team in the RD Directory and apply in the final stage of the application process.



APPLYING AS A PROJECT LEADER

Once you have completed a step you will receive instructions for the next step.

2 23 JAN - 15 MARCH ReDefine DIRECTORY

Once you have been approved and invited into the RD Directory, create your profile and submit your project (whether it is complete or at a brainstorming stage) and find your team members (if you already have team members, they also must apply in the initial stage (and tick "Team Member"). As a Leader, you must submit a project in the Directory and others may ask to join your team



3 23 JAN - 15 MARCH Final Applications

Once you have completed the project criteria (have members from all 3 categories - including yourself - and settled on a project idea/plan) please submit the final application as the project Leader with your Team Members listed for final evaluation.



HOW TO USE THE RD DIRECTORY

- Find profiles of other applicants with the label "Team Member" that are looking for projects - email them asking if they want to have a chat and potentially join your project
- Be contacted by Team Members looking to join projects, have a chat and maybe they'll be the right fit into your team and your project

**T
I
P
S**

- Submit the Initial Application Form ASAP - you want to be in the Directory phase as soon as possible and for as long as possible - you can edit both your profile and project until submission
- Assistance will be available in matchmaking and fundamental project formation in the 2nd (Directory) stage of the application process

APPLYING AS A TEAM MEMBER

1 FROM 15 JAN Initial Application

Fill out your initial profile form. Check the box "Team Member" and submit ASAP. You'll be invited to create a profile in the ReDefine Directory if selected in the first stage. You'll want to submit this as soon as possible so you can find a project to join in the RD Directory and be part of a team applying in the final stage of the application process.



APPLYING AS A PROJECT TEAM MEMBER

Once you have completed a step you will receive instructions for the next step.

2 23 JAN - 15 MARCH ReDefine DIRECTORY

Once you have been approved and invited into the RD Directory, create your profile so you can be found by Project Leaders or go into existing projects and ask to join a project as a Team Member. To join a project contact the Project Leader. It is up to you to contact anyone through the Directory, arrange meetings, join projects, develop and finalise project proposals and so on.



3 23 JAN - 15 MARCH Final Applications

Once you are part of a project team and your team has completed the project criteria (have members from all 3 categories and have settled on a project idea/plan), your Team Leader will submit the final application (with you listed as Team Member) for final evaluation.



HOW TO USE THE RD DIRECTORY

- Find projects that are looking for Team Members - email them, chat and see if their project is a good fit for you and vice-versa.
- Be contacted by Project Leaders looking for Team Members for their project.

**T
I
P
S**

- Submit the Initial Application Form ASAP - you want to be in the Directory phase as soon as possible and for as long as possible - you can edit your profile until the 15th of March there
- The GARI team will be available to assist in matchmaking and fundamental project formation in the 2nd (Directory) stage of the application process

PROGRAM STAGES:

TEAM & PROJECT FORMATION & APPLICATION	2024	APPLICATION AND SELECTION
PHASE 1 - INITIAL APPLICATION	January - March	Interested candidates will submit an initial application necessary to then join the Candidate Directory and find other team members. If you already have team members then indicate this in the initial application and all team members needs to apply as well, and join the Directory.
PHASE 2 - TEAM FORMATION	January - March	Interested candidates will form teams from known connections and/or the RD Directory
PHASE 3 - TEAM & PROJECT APPLICATION	Deadline March 15th 00:00 CET	Formed teams will apply for challenges with their project
TEAM & PROJECT SELECTION	On a rolling basis - announcement March 28th	Teams will be selected to become ReDefiners and part of the program

N100 TEAM & PROJECT INCUBATION	MARCH - MAY 2024	Project incubation: workshops, mentoring & support. Teams to attend & present @ Next 100 Symposium in Berlin
PHASE 4 - TEAM & PROJECT DEVELOPMENT	April - May 5 hours of ReDefine online program + expected 20-40 hours of individual team work	Teams will develop their projects (research, planning, development). Teams can reform with new members or members from other teams or the RD Directory.
PHASE 5 - NEXT 100 SYMPOSIUM	May 12-18 full-time in Berlin	All teams attend and present at the N100 Symposium - projects receive feedback and scores

Next 100 week

During the N100 week there will be morning workshops led by experts followed by team application time (workshop content application and trial). There will be lunch provided followed by time for individual team project development and presentation creation. The afternoon and evening will be for own project work & experiences in Berlin (visit to landmarks, visits/meetings with relevant institutions, free time, evening events).

DATE	MORNING AGENDA	AGENDA CONTENT	AFTERNOON EVENING
SUN 12. May	Arrival in Berlin &	Briefing and welcome	Opening of the ReDefine

	meet and greet		N100 program
MON 13. May	Morning workshops & Project development	<i>Topical workshop (e.g. about the twin transition)</i>	Afternoon Berlin exploration/agenda
TUE 14. May	Morning workshops & Project development	Presentation & pitching + networking workshops and practice	Afternoon Berlin exploration/agenda
WED 15. May	Final day of project development	Free day - teams to finalise their presentations & prep for pitches	Pre-N100 Dinner with N100 guests
THUR 16. May	N100 Day 1	Team presentations	N100 Dinner
FRI 17. May	N100 Day 2	Team presentations	Free evening - no program
SAT 18. May	Free morning	Afternoon presentation/pitch assessment & feedback	Departures

ReDefine Next 100 program fee:

- If you are a project leader and your project (fulfilling criteria) is selected to become part of the program, you must pay the program fee of €1,000. You may apply for the discounted rate of €600 if the project is selected.
- If you are a Team Member (and do not lead a project) you do not have to pay this fee, however, you will not be attending the Next 100 week in Berlin and the Next 100 Symposium - if you wish to attend as a Team Member, you must pay the program fee.
- If you are a national, or resident or have strong connections to the Visegrad region (Czech Republic, Slovakia, Poland, Hungary) please select to apply as a Visegrad Scholarship applicant.

The program fee covers: Virtual mentorship, workshops and project assistance. Accommodation in Berlin from the 12th to the 19th of May 2024, in-person workshops and lunches on the 13th and 14th of May, ReDefine Dinner and other potential official events, Next 100 Symposium attendance and catering, Next 100 Dinner.

The Program fee does not include: travel to and from Berlin, local transportation, personal costs outside the program components (food, drinks, pocket money)

Interactive platform

Before the N100 in Berlin (early May), the ReDefine team projects will be published on the Next 100 Symposium website (ReDefine page) open to feedback. Along with the project information, there will be a function to comment or question the projects, as well as show interest in collaboration, financing or application - this will stay open from the beginning of May until the end of the Next 100 week. This will ensure open knowledge sharing and an invitation to collaborate.

The teams will be responsible for content moderation, respond to comments and questions, and facilitate collaboration inquiries. Regular updates and notifications will be posted to keep the platform dynamic. Partners will be able to engage in the platform and lighthouse leading questions and debates aiding in the furthering of the open dialogue and development.

CHALLENGES

1. Climate Change/Green Energy Transition: Ensure a 'Just Transition' in navigating energy solutions for a sustainable future that safeguards our planet and society. Address socio-economic disparities and champion equal opportunities to leave no one behind, ensuring a 'just transition.'
 2. Digital Transition: Pioneering a 'Just Transition' in the Digital Era: In the ever-evolving digital landscape, explore groundbreaking solutions to bridge the digital divide. From harnessing the power of emerging technologies to ensuring universal digital access, embark on a 'just transition' that promotes fairness, inclusivity, and equal opportunities for all.
 3. Unleashing Neuroscience as an Interdisciplinary Tool: Dive into the intersection of neuroscience and critical global themes, including society, globalization, conflicts, inequality, and the economy. Explore new horizons in technology, healthcare, and human behavior. Redefine possibilities and join us in integrating neuroscience into the global landscape of innovation.
 4. (De)Globalisation, Supply Chains, Transportation: In a world grappling with the complexities of (de)globalization, chart a course that navigates these shifts effectively. Balance regional autonomy with global collaboration, aim to find sustainable pathways.
 5. Trust Deficit - Reinforcing Governance: Explore the multifaceted decline of trust in public institutions globally, driven by transparency issues, misinformation, and socio-economic disparities. Governance strategies to rebuilding public confidence.
 6. Biodiversity: There's an urgent need to not only protect our planet's biodiversity & contribute to conservation efforts but to repair and regenerate. Sustainability is not enough. Seek innovative solutions that heal & safeguard our planet's rich ecosystems.
-